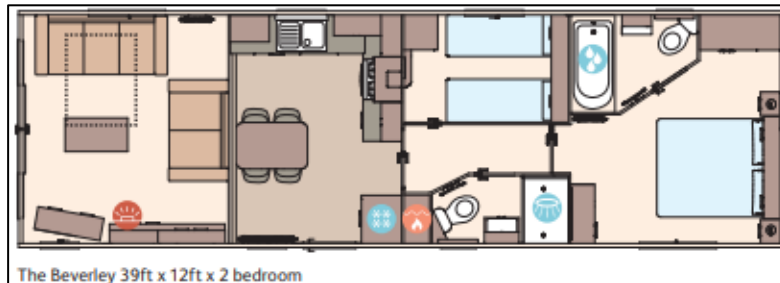
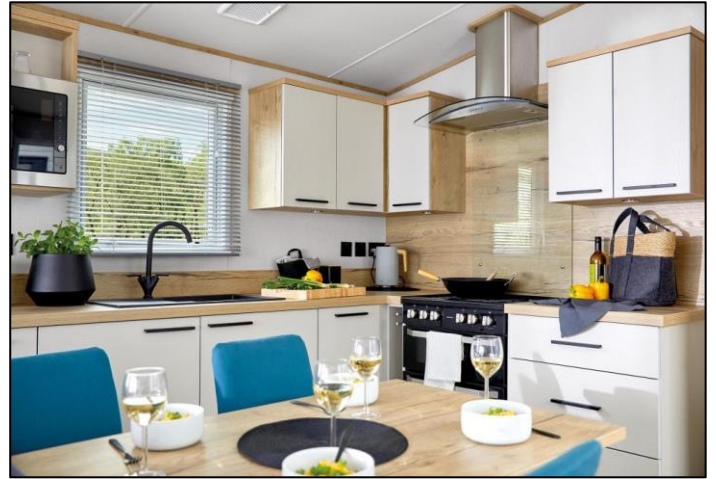


ABI Beverley 2023



With sleek matte black finishes and contrasting woods, the Beverley is seriously stylish. From designer-look lighting to stripped-back handles, every inch feels original, a touch urban and utterly desirable.

Holiday home specification:

Dimensions: 39' x 12'

Bedrooms: 2

Sited on pitch 15

Price: £86,500

Highlights:

- **Stunning large glass and composite decking**
- Home from home comforts throughout
- Comfortable free-standing sofas
- Shower en-suite

Siting, connection and transport charges are included

What we think of the 'ABI Beverley' here at Eastham Hall Holiday Park:

"This holiday home feels spacious, and the updated styling gives it pizzazz. Sited on a very private pitch."